

Human HLA-A*02:01&B2M&WT-1 (RMFPNAPYL) Tetramer Protein



Cat. No. MHC-HM431T

Description

Source	Recombinant Human HLA-A*02:01&B2M&WT-1 (RMFPNAPYL) Tetramer Protein is expressed from HEK293 with His tag and Avi tag at the C-Terminus, tetramer is assembled by biotinylated monomer and streptavidin. It contains Gly25-Thr305(HLA-A*02:01), Ile21-Met119(B2M) and RMFPNAPYL peptide.
Accession	A0A140T913(HLA-A*02:01)&P61769(B2M)&RMFPNAPYL
Molecular Weight	The protein has a predicted MW of 258 kDa. Due to glycosylation, the protein migrates to 260-265 kDa under Non reducing (N) condition based on Bis-Tris PAGE result.
Endotoxin	Less than 1EU per µg by the LAL method.
Purity	> 95% as determined by Bis-Tris PAGE > 95% as determined by HPLC

Formulation and Storage

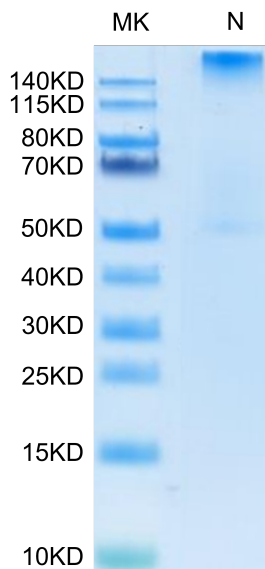
Formulation	Lyophilized from 0.22µm filtered solution in PBS (pH 7.4). Normally 8% trehalose is added as protectant before lyophilization.
Reconstitution	Centrifuge the tube before opening. Reconstituting to a concentration more than 100 µg/ml is recommended. Dissolve the lyophilized protein in distilled water.
Storage	-20 to -80°C for 12 months as supplied from date of receipt. -80°C for 3 months after reconstitution. Recommend to aliquot the protein into smaller quantities for optimal storage. Please minimize freeze-thaw cycles.

Background

The WT1 protein plays a role in cell growth, the process by which cells mature to perform specific functions (differentiation), and the self-destruction of cells (apoptosis). WT1 is differentially expressed in serous, endometrioid, clear cell, and mucinous carcinomas of the peritoneum, fallopian tube, ovary, and endometrium. The Human HLA-A*0201 WT-1 (RMFPNAPYL) complex Protein is a complex of HLA-A*0201 of the MHC Class I, B2M and RMFPNAPYL peptide of the WT-1.

Assay Data

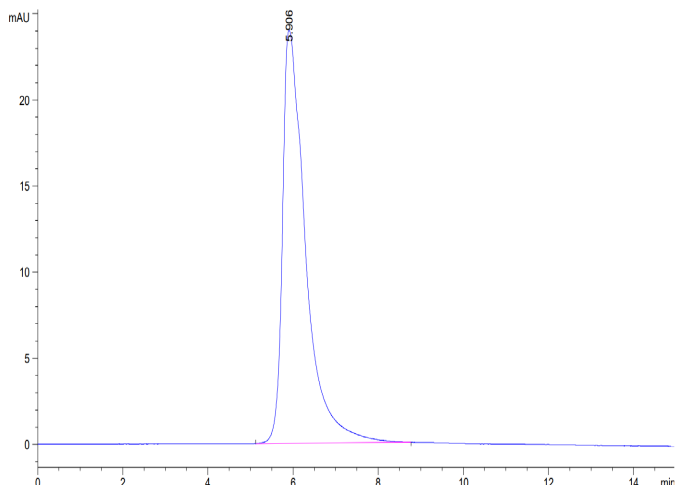
Bis-Tris PAGE



Human HLA-A*02:01&B2M&WT-1 (RMFPNAPYL) Tetramer on Bis-Tris PAGE under Non reducing (N) condition. The purity is greater than 95%.

SEC-HPLC

Assay Data

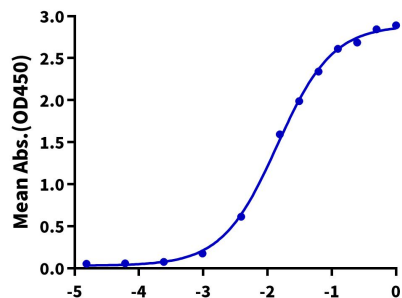


The purity of Human HLA-A*02:01&B2M&WT-1 (RMFPNAPYL) Tetramer was greater than 95% as determined by SEC-HPLC.

ELISA Data

Human HLA-A*02:01&B2M&WT-1 (RMFPNAPYL) Tetramer, His Tag ELISA

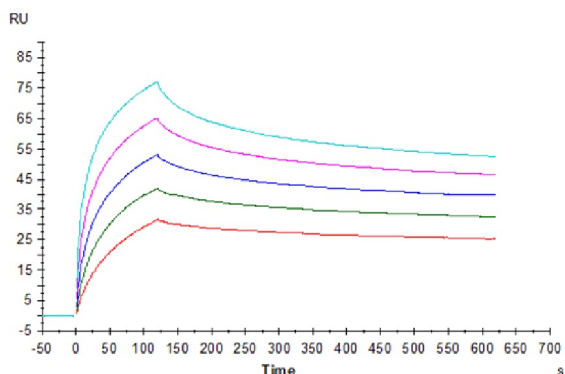
0.1µg Human HLA-A*02:01&B2M&WT-1 (RMFPNAPYL) Tetramer, His Tag Per Well



Log Anti-HLA-A*02:01&B2M&WT-1 Antibody, hFc Tag Conc. (µg/ml)

Immobilized Human HLA-A*02:01&B2M&WT-1 (RMFPNAPYL) Tetramer, His Tag at 1µg/ml (100µl/Well) on the plate. Dose response curve for Anti-HLA-A*02:01&B2M&WT-1 (RMFPNAPYL) Antibody, hFc Tag with the EC50 of 14.2ng/ml determined by ELISA (QC Test).

SPR Data



Anti-HLA-A*02:01&B2M&WT-1 (RMFPNAPYL) Antibody captured on Protein A chip, can bind Human HLA-A*02:01&B2M&WT-1 (RMFPNAPYL) Tetramer, His Tag with an affinity constant of 0.18nM as determined in a SPR assay (Biacore T200).